



# Online Certificate Course in Astrobiology & Paleontology | Batch 08 | G 02 | 2026

## ජීව තාරකා විද්‍යාව හා ලොසිල විද්‍යාව කෙටි කාලීන සහතික පත්‍ර පාඨමාලාව

**COURSE TYPE:** Short Certificate | **MODE:** Online/ Distance learning | **COURSE HOURS:** 100

**DURATION:** 3 Months/ Each Saturday 6.30pm to 8.30pm [IST]

**START:** 6<sup>th</sup> of June 2026 | **Application DEADLINE:** 3<sup>rd</sup> of June 2026

Contact info: 0774526520 | 0114216868 |  
[Info@ecoastronomy.edu.lk](mailto:Info@ecoastronomy.edu.lk) | [hr.ecoastronomy@gmail.com](mailto:hr.ecoastronomy@gmail.com)

### Guidelines for Course Registration

ජෛව තාරකා විද්‍යා ආයතනය ශ්‍රී ලංකාවේ ලියාපදිංචි නිල ආයතනයක් වේ. අප ආයතනය අන්තර්ජාතික තලයේ ආයතන සමඟ නිල වශයෙන් ජීව තාරකා විද්‍යාව හා ලොසිල විද්‍යාව ආශ්‍රිත පර්යේෂණ කටයුතු සඳහාද සම්බන්ධ වී ඇත. ශ්‍රී ලංකාව තුළ හමුවන ලොසිල සාධක 500කට වැඩි ප්‍රමාණයක් දැනට අප ආයතනට හරහා සංරක්ෂණය කර ඇත. [\[Book Download\]](#). ලොසිල හා අන්තරික තත්ත්ව අධ්‍යයනය හරහා පෘථිවිය මත අදීකාලීන ජීවය හා පෘථිවියෙන් පරිබාහිර ජීවය සම්බන්ධ තොරතුරු ගවේෂණයට කරුණු අනාවරනය කරගත හැකිය. අප ආයතනය නිර්මාණය කල Mars Regolith Simulant / කෘතීම අභහරු පාෂාණ ඇමරිකාවේ [Mars Society](#)– [MDRS](#) හා [protoplanet india](#) යන පර්යේෂණ ආයතන සඳහා ලබා දී ඇත. Eco Astronomy Inc ආයතනය [Research organization registry](#) හිද ලියාපදිංචි ආයතනයක් වේ. තවද අප ආයතනය [SpaceVrse](#) හා [Space Hero](#) යන අභ්‍යවකාශ ප්‍රවර්ධන ව්‍යාපෘති වල නිල සාමජිකයින් වේ. මෙම විෂය ශ්‍රී ලංකාව තුළ නිවැරදි ආකාරයෙන් ප්‍රවලිත කිරීමේ අරමුණින් අදාල පාඨමාලාව ශ්‍රී ලංකාව තුළ ක්‍රියාත්මක කරන අතර සිංහල මාධ්‍යය දෙවන කණ්ඩායම සඳහා ලියාපදිංචියට විවෘත වේ. අදාල විෂයට උනන්දුවක් දක්වන වයස අවුරුදු 8 වැඩි ඕනෑම අයෙකුට මේ සඳහා සම්බන්ධ විය හැකිය. මෙම පාඨමාලාවේ සම්පූර්ණ කාලය මාස 3 ක් වන අතර පාඨමාලා ගාස්තුව රු 12,000 වේ. පාඨමාලා ගාස්තු කොටස් 3 ක් වශයෙන් ගෙවීම සිදුකළ හැකිය. තවද එකවර ගෙවීමේදී සම්පූර්ණ පාඨමාලා ගාස්තුව ලෙස සැලකෙන්නේ රු.10,000 වේ. ලියාපදිංචියට පෙර පහත උපදෙස් හොඳින් කියවන්න. සියළුම දේශන ඉංග්‍රීසි මාධ්‍යයෙන් ක්‍රියාත්මක වේ. පාඨමාලාව අවසානයේ ක්‍රියාත්මක කරනු ලබන Open Science Training Program 2026 | Phase 02 වැඩමුළුව සඳහා සියළුම දෙනා සහභාගී විය යුතු අතර ඒ හරහා මූලික සහතික පත්‍රයට අමතරව තවත් සහතික පත්‍ර දෙකක් ලබාගැනීමට හැකිය. ප්‍රථමයෙන් ලියාපදිංචි වන 20 දෙනා පමණක් තෝරා ගන්න බව කරුණාවෙන් සලකන්න. පාඨමාලාවට අදාල සියළුම දේශන වල පටිගත කිරීම් ලබාගත හැකිය. මෙම පාඨමාලාව පිළිබඳ සරළ අවබෝධයක් ලබාගැනීමට පෙර සිසුන්ගේ ක්‍රියාකරකම් වෙත යොමුවන්න [\[ Students Event 01 | Students Event 02\]](#). පෙර පැවති දේශන පිළිබඳ අවබෝධක් ලබාගැනීම සඳහා [\[Click Here\]](#) Notice: විශ්ව විද්‍යාලවිද්‍යාල සිසුන් සඳහා පමණක් වන YSP Project or Eco Astronomy Internship පහසුකම ලබාදෙන අතර සම්බන්ධ තොරතුරු මෙම පාඨමාලාව ආරම්භයේදී ලබාගත හැකිය.

[Eco Astronomy Inc.](#) stands as Sri Lanka's best multidisciplinary astronomical research institution, dedicated to pioneering exploration at the nexus of astrobiology and paleontology. We foster and maintain official international collaborations, positioning Sri Lanka on the global map of cutting-edge scientific research. A core pillar of our mission is the conservation of our nation's natural heritage [[Check Space Vrse partnership network](#)]. We are the proud custodians of a significant collection of over 500 fossil specimens discovered within Sri Lanka, ensuring their preservation for future scientific study. [[Download Book](#)] Our innovative contributions extend to space exploration research. We have developed a proprietary [Mars Regolith Simulant](#), a high-fidelity analog of Martian soil. This critical resource is already in use by leading international organizations, including The Mars Society (MDRS) in the United States and Proto Planet in India. Eco Astronomy Inc. is a recognized research entity, officially listed within the [Global Research Identifier Database \(GRID\) / Research Organization Registry \(ROR\)](#).

Committed to cultivating the next generation of scientific pioneers, Eco Astronomy Inc. is pleased to announce that registration is now open for the seventh batch of our foundational course. This immersive 3-month program, conducted entirely in English, is designed for passionate individuals aged above 8 years. To ensure accessibility, flexible installment plans are available for course fees. This three-month course (3) is offered at a standard fee of **Rs. 12,000**, with the option to pay in 3 installments; however, a discounted rate of **Rs. 10,000** is available for those who choose to pay the full amount upfront. Please read the following instructions carefully before registering, noting that all lectures are conducted in **English** and enrollment is strictly limited to the **first 20 applicants**. To successfully complete the program, all students are required to participate in the **Open Science Training Program 2026 | Phase 02** workshop, which provides the opportunity to earn two additional specialized certificates in addition to the primary course credential. Recordings of all sessions will be accessible for review, and prospective students are encouraged to refer to previous student activities to gain a clear understanding of the course curriculum.

### **1.Importance of Studying Astrobiology and Paleontology**

Astrobiology and paleontology are two interconnected scientific disciplines that contribute to our understanding of life's origins, evolution, and potential existence beyond Earth. Astrobiology investigates the conditions necessary for life to emerge and persist in the universe, examining planetary habitability, biosignatures, and extremophiles as analogs for extraterrestrial life. Meanwhile, paleontology focuses on Earth's fossil record, reconstructing the history of life and the environmental factors that shaped its development over billions of years.

The study of astrobiology is essential for assessing the possibility of life beyond Earth, guiding space exploration missions, and refining our understanding of planetary systems and their potential for habitability. It integrates knowledge from biology, chemistry, planetary science, and astronomy to explore fundamental questions about life's existence elsewhere in the cosmos. Similarly, paleontology provides critical insights into the history of life on Earth, revealing patterns of evolution, mass extinctions, and survival strategies that inform our search for life in extreme environments, both on our planet and on other celestial bodies.

By combining insights from both fields, scientists can develop models to predict where and how life might exist beyond Earth. Studying ancient microbial fossils, such as stromatolites, helps refine techniques for

identifying biosignatures on Mars and icy moons like Europa and Enceladus. Understanding past extinction events on Earth also aids in recognizing planetary conditions that may be conducive or hostile to sustaining life elsewhere.

Overall, the interdisciplinary study of astrobiology and paleontology enhances our knowledge of life's potential in the universe while deepening our appreciation for Earth's biological history. As space exploration advances, these fields will continue to play a crucial role in answering fundamental questions about our place in the cosmos.

Therefore, The Online Certificate Course in Astrobiology and Paleontology, introduced by Eco Astronomy Inc. - International Hub, aims to enhance awareness and outreach in the fields of Astrobiology and Paleontology across Planet Earth. This interdisciplinary program integrates principles of paleontology, geology, and astrobiology, fostering a comprehensive understanding of Earth's biological and geological past while exploring extraterrestrial environments for signs of life.

### Course Modules (Curriculum Outline)

1. History and Theoretical Foundations of Paleontology and Geology | Multidisciplinary applications of Astronomy and Space Science Part 01
2. Introduction to Astrobiology and its Intersection with Paleontology | Multidisciplinary applications of Astronomy and Space Science Part 02,03
3. Fossils, Fossilization, and Preservation Methods (Part 1 & Part 2) Geology of Mars and Landscape Traces.
4. Fossil Preservation in Planet Earth – Examining the region's unique fossil records and their significance in evolutionary studies.
5. Fossils, Minerals, and Commercial Applications – Assessing the economic and scientific value of fossils and minerals in industry and research.
6. Advanced Analysis of Invertebrate and Ichnological Fossils – Studying trace fossils and their implications for understanding ancient ecosystems.
7. Special Astrobiology Lecture: Analog Studies & Planetary Geology (Part 1 & Part 2) – Reviewing terrestrial analog environments that simulate extraterrestrial conditions.
8. Biotechnology Beyond Earth: Innovations for Space Exploration – Exploring biotechnological advancements supporting life and resource utilization in space.
9. Introduction to Meteorite, Mineral, and Rock Identification – Learning techniques for recognizing extraterrestrial and terrestrial geological materials.
10. Astro-ecology and Earth Observation from Space – Analyzing Earth's biosphere through remote sensing and space-based environmental monitoring.
11. Universe, Start formation and elementary support for the life. Part 01, Part 02, Part 03
12. Earth Mars Analogies and fundamentals of Planetary Geology. D01, D02, D03, D04,
13. **Open Science Training Program 2026 | Phase 02** workshop

3. The Online Certificate Course in Astrobiology and Paleontology (Batch 08 | Group 02) is designed to provide in-depth knowledge in these domains through expert-led lectures. This program is conducted by an international research team of scientists affiliated with the Eco Astronomy Inc. (SL) Research Hub, an institution dedicated to advancing scientific understanding of extraterrestrial environments and ancient life forms on Earth [ ([Check for Scientists](#))

4. This specialized certificate course is designed for students aged above 8 years who have a strong interest in scientific discovery. Tailored for beginners, the program introduces fundamental concepts, fostering curiosity about the search for extraterrestrial life and the fossil record of ancient organisms.

To ensure a focused and interactive learning experience, only the first 20 applicants will be selected. Interested candidates are encouraged to register at the earliest. **Registration Deadline: 3<sup>rd</sup> of June, 2026.**

5. Upon successful registration for the course, the following guidelines must be adhered to in order to ensure timely completion as per the scheduled timeline.

1. A minimum of 80% attendance is required for course lectures.
2. Completion of a short assignments report in accordance with the instructions provided by the course coordinator. **20% [A]**
3. Completed the PowerPoint presentation in accordance with the guidelines provided by the course coordinator. **20% [B]**
4. Open Science Data Repository | **20% [C- Not compulsory]**
5. Completion of the open-book test as the final online examination. **20 % [E]**

6. Once you have completed all the segments, your certificate will be delivered to you via courier service. Additionally, you may request an electronic transcript of your examination marks.

7. The Orientation Program for your upcoming course will take place on **6<sup>th</sup> of June 2026, from 6:30 PM to 8:30 PM Sri Lankan Time**. During this session, we will provide further details about the course, as well as engage in practical activities related to the content. As the course will be conducted via the Microsoft Teams platform, we kindly request that you ensure the Microsoft Teams application is installed on your computer or smartphone prior to the session. Additionally, please make sure you complete the necessary basic logins to facilitate a smooth participation experience. This course will be conducted every Saturday from 6:30 PM to 8:30 PM, spanning a duration of five months.

## Course Fee

[Included - Tuition Fee, Examination Fee, Certification fee]

**Full course Payment: 10,000 LKR**

**Option 01:** One time Pay: The course fee is [10,000 LKR]

**Option 02:** If you are unable to make the full payment upfront, you have the option to pay in installments. The total fee can be divided into 3 stages:

- **1<sup>st</sup> Installment:** 4,000LKR (to be paid before **3<sup>rd</sup> June, 2026**)
- **2<sup>nd</sup> Installment:** 4,000 LKR (to be paid before **1<sup>st</sup> July, 2026**)
- **3<sup>rd</sup> Installment:** 4,000 LKR (to be paid before **1<sup>st</sup> August, 2026**)

## Process Of Registration

1. **Submit your birth certificate to +94774526520 and request a course permission code.**
2. Finalize the first installment and Join the LMS of Course. [Adeepa Nisal | Technical Assistant - +94774526520]

**Important Note:** Before proceeding with registration, all applicants must contact **Ms. Nethumi Ayodhya (Course Assistant - +94774526520)** to request a **course permission code**. Failure to do so may result in ineligibility for enrollment.

ලියාපදිංචිවීම සඳහා ඔබගේ උප්පත්ත සහතිකයේ / ඡාතික හැඳුනුම් පතේ පිටපතක් මෙම whatsapp අංකයට යොමුකරන්න [0774526520]. දුරකතන අංකයට 0774526520 අමතා උපදෙස් පිළිපදින්න. පාඨමාලා කේතය ලබාදුන් පසු ඔබට ලියාපදිංචි විය හැකිය. අදාල ලේඛණ හෝ පාඨමාලා කේතය ලබාගැනීමට පෙර පාඨමාලා ගාස්තුව නොගෙවිය යුතුය. සියළු කටයුතු සම්පූර්ණ කල පසු මුදල් බැරකල පත්‍රිකාවේ පිටපතක් පහත පෝරමයට ඇතුළු කර අයදුම්පත්‍රය පුරවන්න.

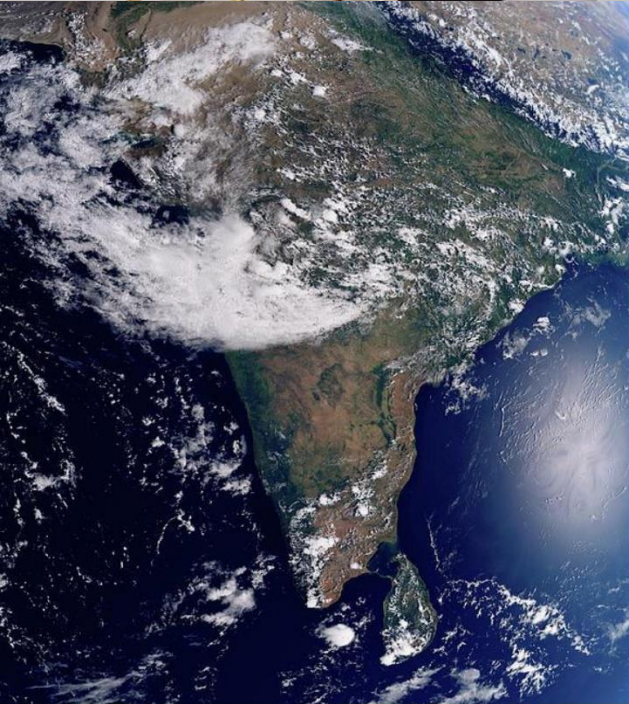
**Institution Name and Account Number:**

**Eco Astronomy Inc | ACC NO: 030020367322 | Hatton National Bank PLC**

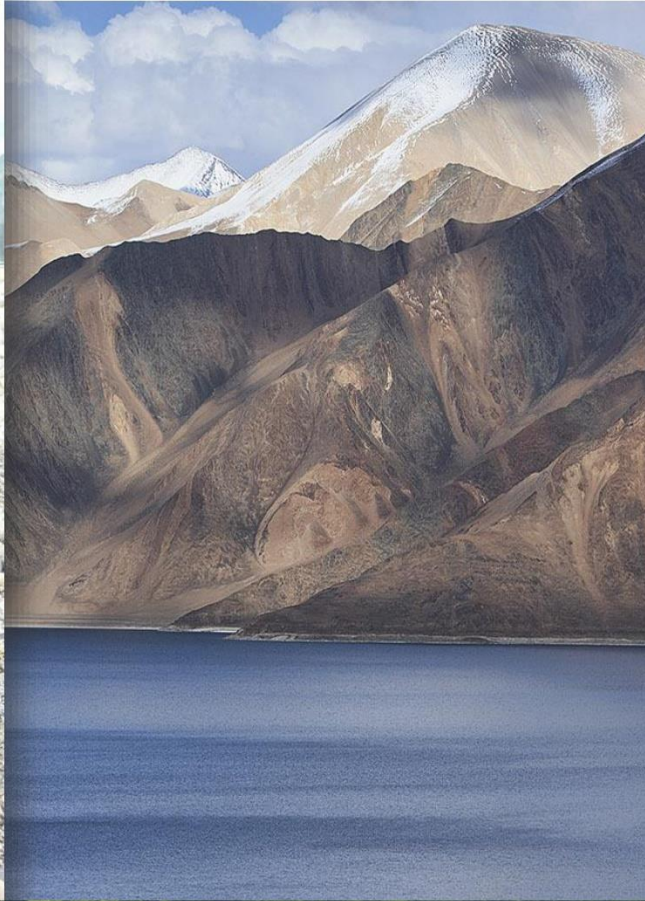
Contact info: **+94774526520 | | +94114216868 |**

[Info@ecoastronomy.edu.lk](mailto:Info@ecoastronomy.edu.lk) | [hr.ecoastronomy@gmail.com](mailto:hr.ecoastronomy@gmail.com)

# CONGRATULATIONS



**AN ICONIC ECOLOGICAL ENGINEER OF ECO ASTRONOMY INC**  
Multidisciplinary Astronomy Awareness and outreach programs



# EARTH MARS ANALOGIES

## PALEONTOLOGICAL EXPLORATION



MARS LAB | ECO ASTRONOMY INC | MADE IN SRI LANKA

# ARTIFICIAL REGOLITH OF MARS



ECO ASTRONOMY  
INTERNATIONAL RESEARCH INSTITUTE



NOW AVAILABLE WITH **MARS DESERT RESEARCH STATION | USA**



Project SPACE LIFE | ECO ASTRONOMY INC

Dr. Eleonore Poli

# Human Analogue | Space Mission



ECO ASTRONOMY  
INTERNATIONAL RESEARCH INSTITUTE

ASTROBIOLOGY | TRACES | LIFE |  
 ECO ASTRONOMY | PLANETARY GEOLOGY

**Mars Society Ambassadors  
 Are Catalysts for Change**

—James Melton, PhD

**OUR STORY**

In the dark stillness of the night, zero four hundred hours a Zoom link is clicked in Pakistan. N reaches for his notepad for the call. Simultaneously, in Australia, at 0700 hours at dawn, Jonathan is ready for work, but before leaving, he clicks on the Zoom link. In the United Kingdom, at 10 PM, Emma and Steve join in. At 4:00 PM in Austin and San Antonio John and Ron are ready. Click, click, click around the world, every time zone.

Suddenly our Zoom link goes live: “Welcome to the Mars Society Ambassador Briefing. It’s 5:30 PM Pacific Time. I’m James Melton, Chief Ambassador for the Mars Society. The Mars Society Ambassador program serves as a professional team of volunteers, Mars Ambassadors, dedicated to elevating public awareness of our mission to send humans to Mars and begin settling the Red Planet. To help move this initiative forward, *this is your invitation to [join the Mars Society Ambassadors.](#)*”



Photo montage designed by Michael Stoltz, Mars Society Public Relations Director

Our Mars Society monthly virtual meetings are one-hour programs where Mars Society Ambassadors interact with and support other Ambassadors, sharing stories of events they organized or attended; chapter meetings, the people they met, and insights they gained from their presentations. Guest speakers share current space endeavors and events relating to Mars. Our Mars Society currently has 42 Ambassadors in 17 countries around our home planet. Participating ambassadors are encouraged to join in monthly meetings to connect with, learn, and share their experiences in Mars advocacy.

<https://www.marssociety.org/mars-ambassador-program/>



The Voice of the Mission

# Ambassador Directory

**Mission Statement**

The Mars Society Ambassador Program is designed to serve as a professional team of people dedicated to elevating public awareness of our mission to land humans on Mars within this decade and begin settling the red planet.



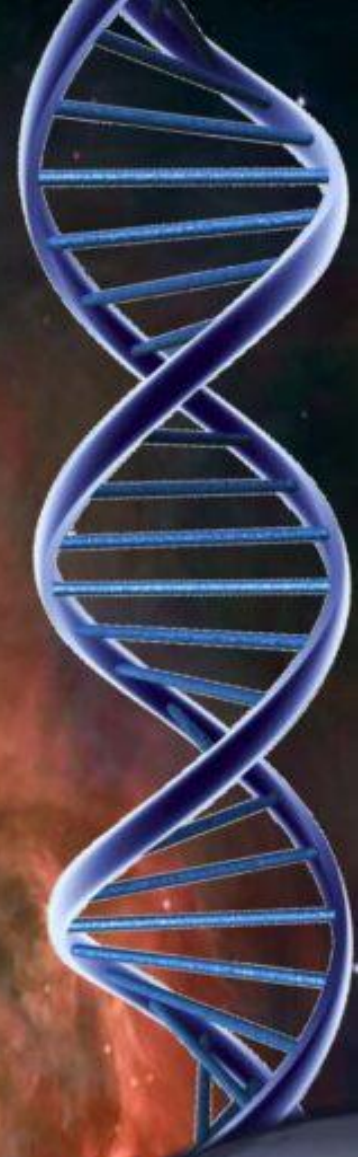
The Mars Society  
[www.MarsSociety.org](http://www.MarsSociety.org)



9 773084 879008

ISSN: 3084-8792

ISBN: 978-955-23-0019-3



# Journal of Eco Astronomy

FROM ECO ASTRONOMY INC RESEARCH NETWORK | Since 2017



# ECO ASTRONOMY INC

PROJECT PALEO RECONSTRUCTION SRI LANKA



**Dr. Jason Kennedy**

Senior Lecturer of Animation & Motion Capture  
Department of Animation, Visual Effects & Games  
Auckland University of Technology  
Associate collaborator of Eco Astronomy Inc



ECO ASTRONOMY  
INTERNATIONAL RESEARCH INSTITUTE

## ECO ASTRONOMY VALUE ADDITION FACILITY



**BUY NOW**

# Sri Lanka: Island of Gems

Discover the finest selection of high-quality gemstones, meticulously sourced and expertly crafted to meet the highest standards. At Prem Gem Inc. we offer only the most exquisite stones, ensuring brilliance, durability, and exceptional value.

Whether you're a collector, jeweler, or enthusiast, our curated collection provides the perfect gemstone for every need. Elevate your designs or add a touch of luxury to your collection with our premium offerings.

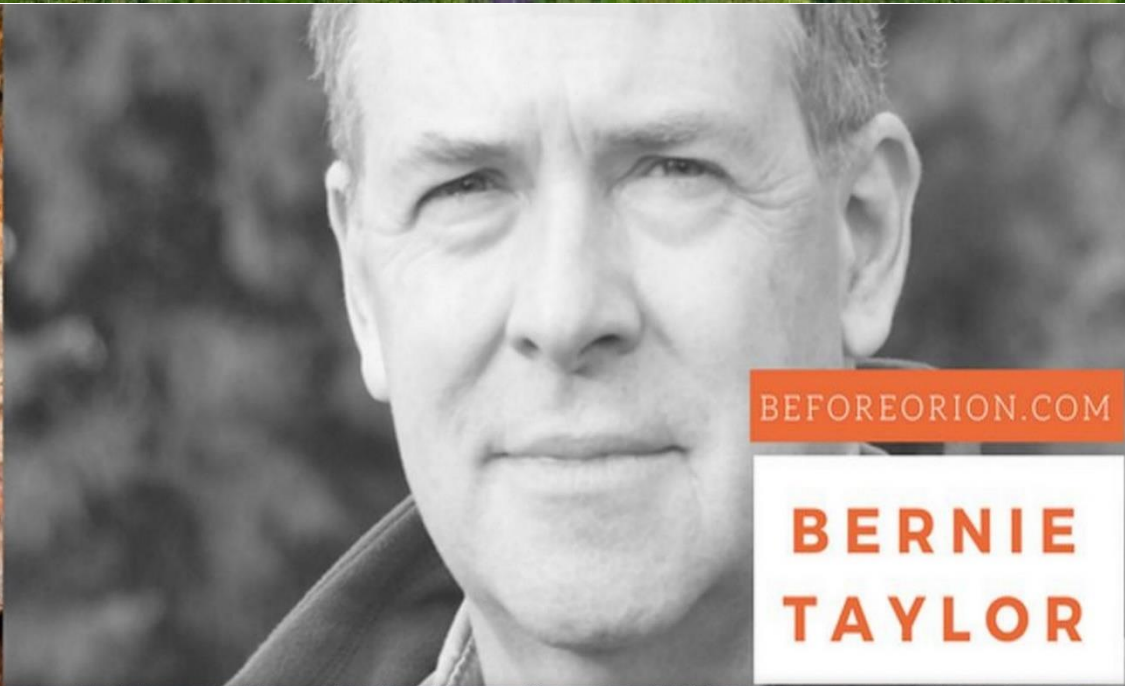
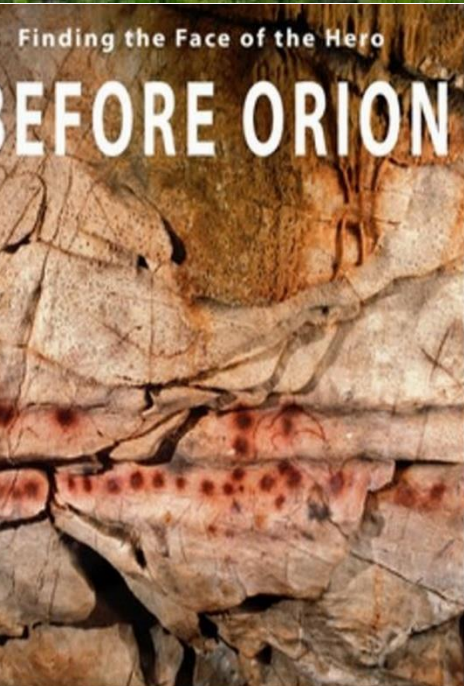
Shop now and experience the unparalleled beauty of authentic, top-tier gemstones



# DANIGALA CODING

ARCHAEOASTRONOMY SRI LANKA

PROJECT BY  
ECO ASTRONOMY INC



ARCHAEOASTRONOMY RESEARCH HUB  
**ECO ASTRONOMY SRI LANKA**

**ASTRO  
WEEK**

Eco Astronomy Inc  
International Lecture Series – 14- 2024



ECO ASTRONOMY  
INTERNATIONAL RESEARCH INSTITUTE

# HOW TO STUDY EARTH ECOSYSTEMS FROM SPACE

GUEST SPEAKER

**Dr. Eng. Majda Aouititen**

DIRECTOR ACADEMIC OF ECO ASTRONOMY INTERNATIONAL NETWORK

# ECO ASTRONOMY INC

Welcome to Eco Astronomy Inc | A Premier Multidisciplinary  
Astronomical Research Institute in South Asia.



ECO ASTRONOMY  
INTERNATIONAL RESEARCH INSTITUTE

*THE NATION WHICH DOES NOT CREATE NEW THINGS WILL NOT RISE*

Kumaratunga Munidasa ( 1887 - 1944 )



Richland Estate, Co- Research Station, Eco Astronomy  
HUB, Beruwaththa, Mitipola, Eheliyagoda 70600.



0114216868 | 0774526520



<https://ecoastronomy.edu.lk/>

# CERTIFICATE AWARDING CEREMONY



BATHWADANAG  
E DISANGA  
THIVEYN  
BATHWADANA



NETHUL  
DANITHMA  
ABEYWICKRAMA



KODIMARAKKAL  
AGE NETHUPA  
SENUMITHA  
RODRIGO



RESHMA  
NAKKAWITA



DEWMINA  
PAHAN  
RAJAPAKSHA



H M ESALA  
BONUKA SRI  
WASALA HERATH



R P HASIDHU  
NIMSARA  
SENRATHNA



SIHELI LINAYA  
DISSANAYAKE



*Congratulations!*

ONLINE CERTIFICATE COURSE IN ASTROBIOLOGY & PALEONTOLOGY | BATCH 06 | ECO-AI - 225-6



2025 වසරේ පාඨමාලාවේ සාර්ථකව නිම කර සහතික පත්‍ර ලබාගත් සිසුන්.

2022 වසරේ සිට Astrobiology & Paleontology අප ආයතනය හරහා පාඨමාලාව ක්‍රියාත්මක වේ.

# CERTIFICATE AWARDING CEREMONY



Dinev Kenodh  
Gunatilake



Riya Varma



Thesangeeth  
Abeysundara



Joana  
Jeyapragasam



Imri Avirada  
Vijegunavardana



Yakkala Arachchige  
Don Rushani Hansika



W.A.K. Sanketh Sathsilu,



Lithumi Hesanya  
Perera



Dulina Sasmika Caldera



Savin Amarasinghe



Mohamed Nawfeer  
Amna



H.M Punsara  
Jayamangalani



*Congratulations!*

COURSE | ECO-AI - 220-5 | ONLINE SHORT COURSE IN AMATEUR ASTRONOMY AND SPACE SCIENCE

31<sup>st</sup> of MAY 2025



# CERTIFICATE AWARDING CEREMONY

ECO ASTRONOMY INC 2025 SUMMER

COURSE | ECO-AI - 225-5 | Online Certificate Course in Astrobiology and Paleontology.



Mohamed Nawfeer  
Amna



H.M Punsara  
Jayamangalani



Imiyage Don  
Chithrali Bhagya  
Kumari  
Gunawardhana.



Walpita  
Kankanamalage  
Lithumi Hesanya  
Perera.



Dulina Sasmika  
Caldera.



Kavindi Upeksha  
Amarasinghe



Wanigarathne  
kodithuwakku  
arachchillage  
sanketh sathsilu



H.H. Maheli  
Meghan.



Rehan Kiriella.



Lakshapathi  
Mahawidanalage  
Shavid Dilsha Nikol  
De Mel



Withana  
Pathirannehelage  
Madushka Lakmali



Thilanga  
Thathsarani  
Nethmithara  
Wickramaratna.



Chameesha Shenasa  
Sudasinghe



P. B. Sadini  
Vimansa De Silva



Walimuni Savini  
Mehansa  
Amarasinghe.



S.S.Navodya.



Vitthamperuma  
Arachchige Gihan  
Harshana



RSP Nayanika  
Chathuri Rajapaksha.



2026 වසරේ පාඨමාලාවලේ සාර්ථකව නිම කර සහතික පත්‍ර ලබාගත් සිසුන්

ECO ASTRONOMY INC | 2026 Summer

ONLINE CERTIFICATE COURSE IN ASTROBIOLOGY & PALEONTOLOGY |  
BATCH 07 | ECO-AI - 225-7 | BATCH 08 G01 | ECO-AI - 225-8



OKANDAPOLA GAMLATHGE  
SANDUNI ANUTHTHARA  
KUMARI



G. S. NETHMINI PATHIRAJA



J. A. AMANYA THEWMINI  
JAYASURIYA



W. M. D. D. K. PANDITHARATNE



H. M. M. D. PIYATHISSA



S. D. SENARATHNE



ASOKAN SHABEESHAAN



ECO ASTRONOMY  
INCORPORATION



Congratulations!

ECO ASTRONOMY INC | 2026 Summer

ONLINE CERTIFICATE COURSE IN ASTROBIOLOGY & PALEONTOLOGY |  
BATCH 01 | ECO-AI - 200-1 | GROUP 01 SN



MOHAMAD FAYAS  
FATHIMA HANEEKA



LOKU PATHIRAGE  
BHAGYA UDAYANGANIE



O. T. M. GAYANI  
CHATHUMALI  
THILAKARATHNA



K. N. LANKESHWAR  
A



SASNUKA DEWRAM IPITAGAMA  
LIYANAARACHCHI



WIJewardana NAIDALAGE  
MAHINDA DASANAYAKE



WITHANAGE  
KAVINDU



M. H. N. NILUPULI MAPA



P. M. RUWAN JAYASANKA

Congratulations! ECO ASTRONOMY  
INCORPORATION



ECO ASTRONOMY  
INTERNATIONAL RESEARCH INSTITUTE



# ONLINE CERTIFICATE COURSE IN ASTROBIOLOGY & PALEONTOLOGY | BATCH 01 | ECO-AI - 200-1 | GROUP 02 SN



I.G.G. P.D. SUMANARATHNA



CHANDRAPPULIGE SANUGA NETHMIRA JAYAMAHA



O.R. ISIWARA PAHANSITH BANDARA



A. H. CHATHUMINI UMANGIKA SEWWANDI



DINUKA NINDUVARI



HAPUJACHIGE DON SANTHUSH SITHARAKA



NAOTUNNAGE YETHUM BUDMINA DE SILVA



W.A. NISITH SHENAL RASMITHA



ECO ASTRONOMY INTERNATIONAL RESEARCH INSTITUTE

*Congratulations!* ECO ASTRONOMY INCORPORATION



# ECO ASTRONOMY INCORPORATION

ECO ASTRONOMY INC | 225 | BATCH 06

## CERTIFICATE COURSE IN ASTROBIOLOGY & PALEONTOLOGY

This is to certify that



has successfully completed the 5-Month Online Short Course in Astrobiology and Paleontology, organized by the Department of Education and Outreach at Eco Astronomy Inc.

Date of Issue: 1<sup>st</sup> of November 2025



ENG. MAJDA AOUITITEN  
Academic Counsellor  
Eco Astronomy Inc



ARAVINDA RAVIBHANU  
Chief Executive Officer  
Eco Astronomy Inc  
Ambassador at The Mars Society USA



පාඨමාලාව සාර්ථකව අවසාන කරන සිසුන් සඳහා මෙම සහතික පත්‍රය හිමිවේ. අදාළ සෑම සහතික පත්‍ර ලාඛයෙකුගේම දත්ත හා ලකුණු QR කේතය හරහා ලබා ගැනීමට හැකිය. සහතික පත්‍ර මුද්‍රිත පිටපතක් ලෙස පමණක් ලබාදෙන අතර Eco Astronomy Inc ආයතනයේ embossed සංකේතය සහිත වේ.





## Online Certificate Course in Astrobiology & Paleontology | Batch 08 | G 02 | 2026

ජීව තාරකා විද්‍යාව හා භෞතික විද්‍යාව  
කෙටි කාලීන සහතික පත්‍ර පාඨමාලාව



Contact info: +94774526520 | +94114216868

[Info@ecoastronomy.edu.lk](mailto:Info@ecoastronomy.edu.lk) | [hr.ecoastronomy@gmail.com](mailto:hr.ecoastronomy@gmail.com)

**Please Visit for more Information and Online Registration**  
<http://ecoastronomy.edu.lk/course> / <https://ecoastronomy.edu.lk/about-us/>



ECO ASTRONOMY  
INTERNATIONAL RESEARCH INSTITUTE

Eco Astronomy Inc © 2026

THE NATION WHICH DOES NOT CREATE NEW THINGS WILL NOT RISE

Kumaratunga Munidasa ( 1887 - 1944 )

